

How to integrate SD-30/40 Analog Door phone with the VoIP Analog Telephone Adaptor

1. Connection's architecture

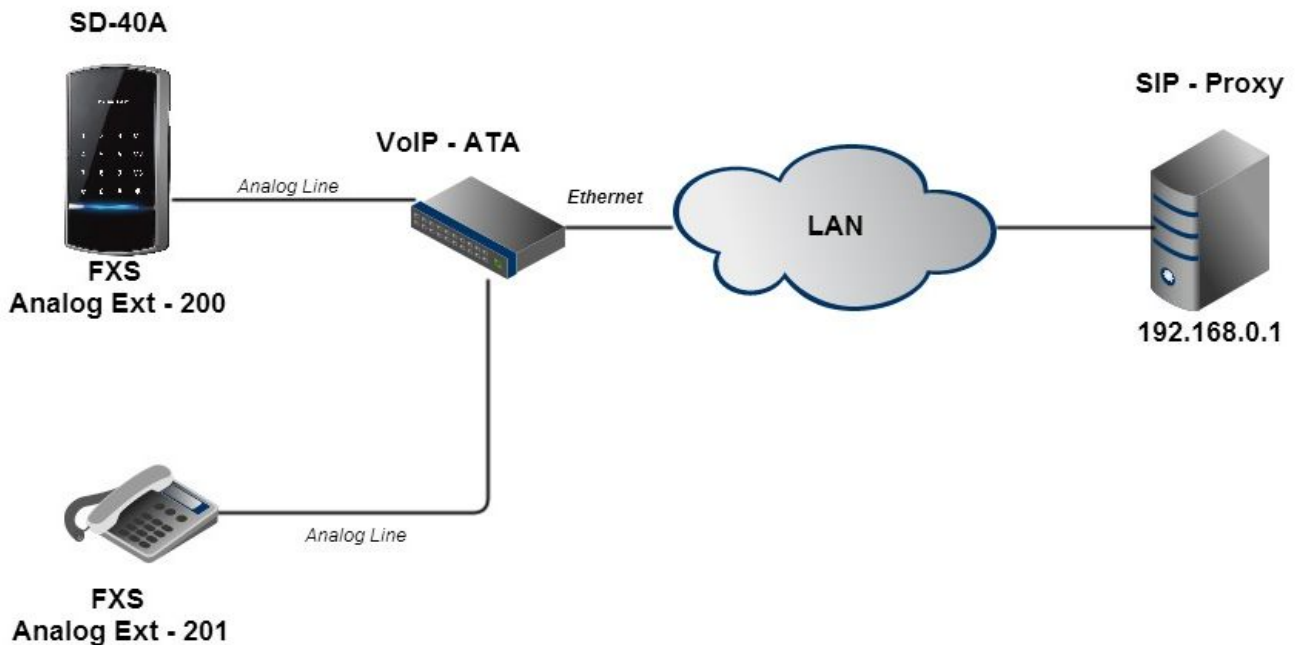


Figure 1 SD-40 integration with ATA

- Components
 - SD-40/30 - A/P – Analog Door Phone, specified as extension 200 in VoIP /SIP proxy
 - FXS – Analog phone – FXS, specified as extension 201 in VoIP /SIP proxy
 - Analog line – POTS – twisted pair telephony interface
 - VoIP – ATA (Analog Telephone Adapter) (Note: CORTELCO ATA – 821200 used as Sample in further in this document)
 - Ethernet – Ethernet interface
 - SIP-Proxy – VoIP IP PBX with the IP address **192.168.0.1**
- ## 2. Connections
- SD-40A connected as FXS extension to VoIP – ATA device
 - VoIP – ATA device connected to a LAN by its Ethernet cable connection
 - VoIP – ATA device shall be available for TCP/IP connection with the SIP proxy server
- ## 3. Configuration
- Note: The 'Reverse polarity' feature shall be disabled in SIP Proxy and VoIP – ATA device in order to provide the SD-40A declared outgoing calls functionality
 - VoIP – ATA device analog extensions shall be configured as authorized SIP extensions in SIP proxy
 - VoIP – ATA configuration screens
 - ATA Configuration SIP Extension parameters (See Figure 2):
 - SIP Proxy IP Address
 - Extension authentication parameters

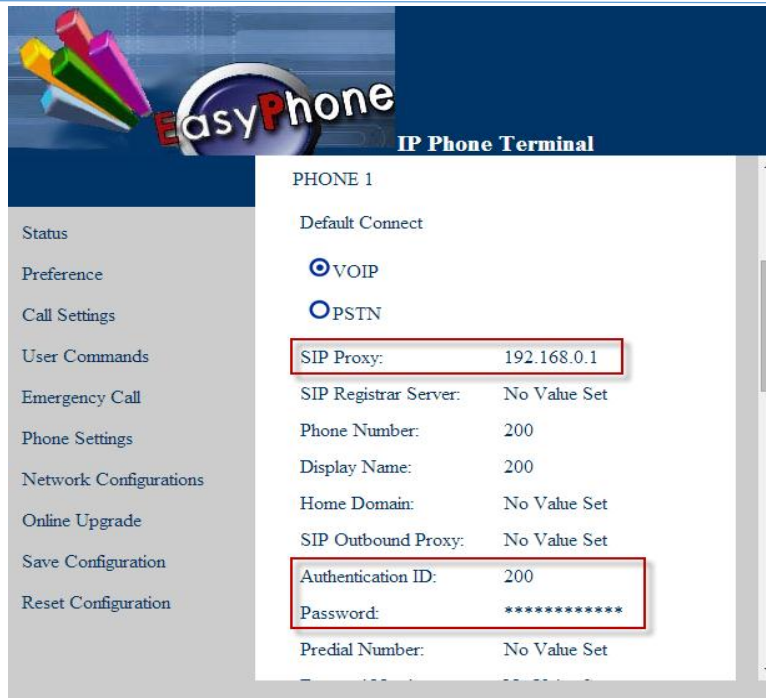
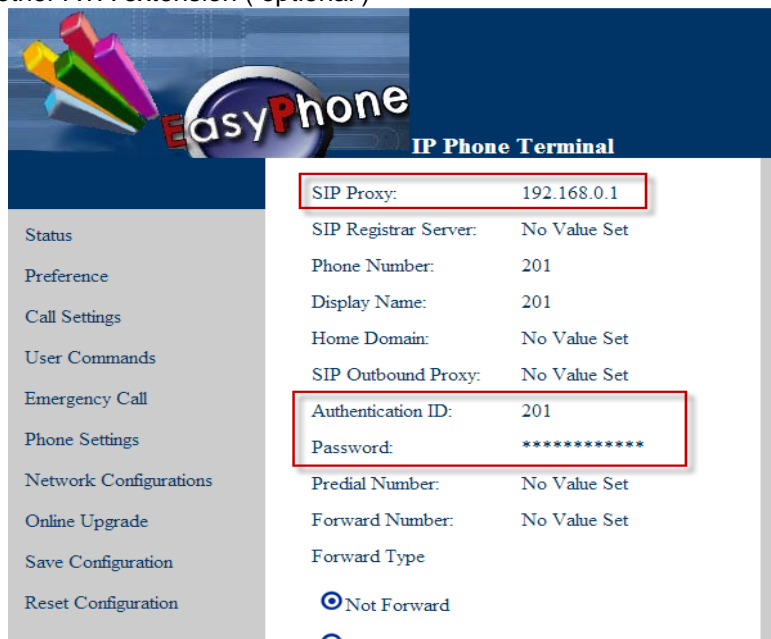


Figure 2 SD-40A Extension ATA configuration

- Configure another ATA extension (optional)



- Enter to SIP-Proxy Administration screen and check that ATA extensions registered. Otherwise, apply to SIP-Proxy administrator for help.

4. SD-40 programming

- Call to SD-40 extension
- Enter to programming mode: ***911 + Password**
- Configure 'Ring' button Operator destination by using ***100** command (See SD-40 / 30 User Manual)
- Exit from programming mode: ***911**
- Press SD-40 'Ring' button in order to call to Operator destination number